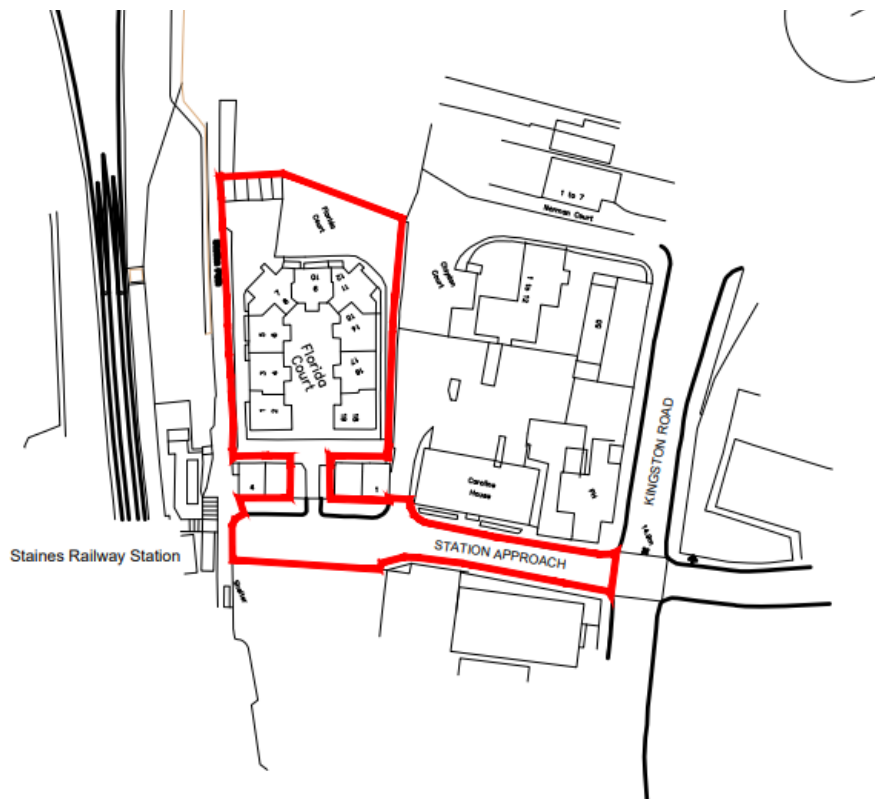
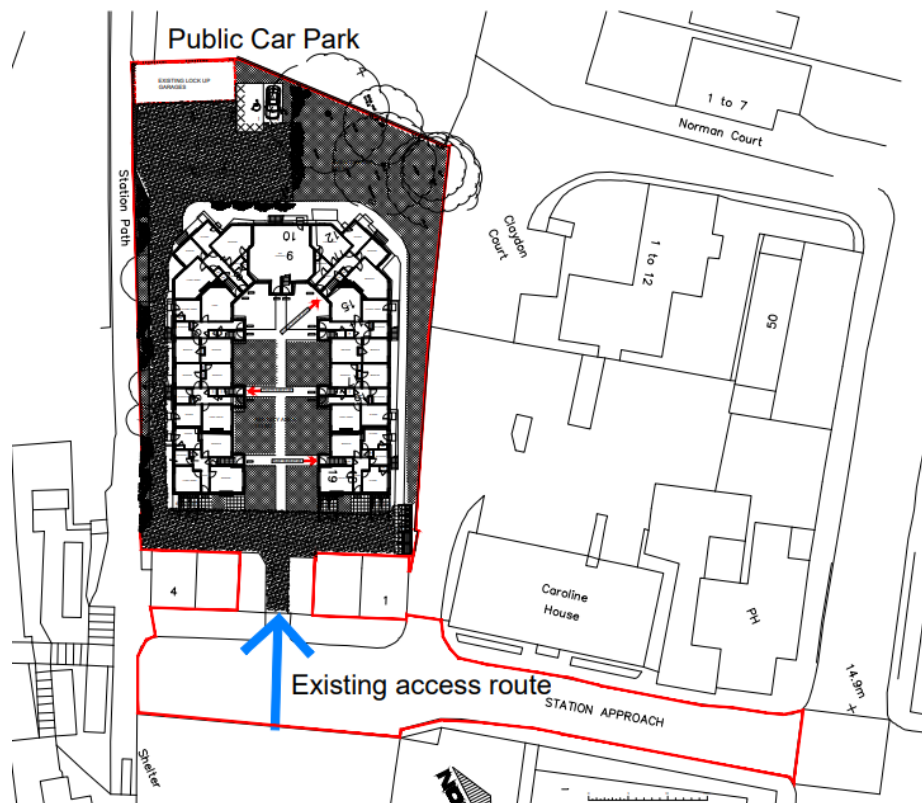


Site Location Plan



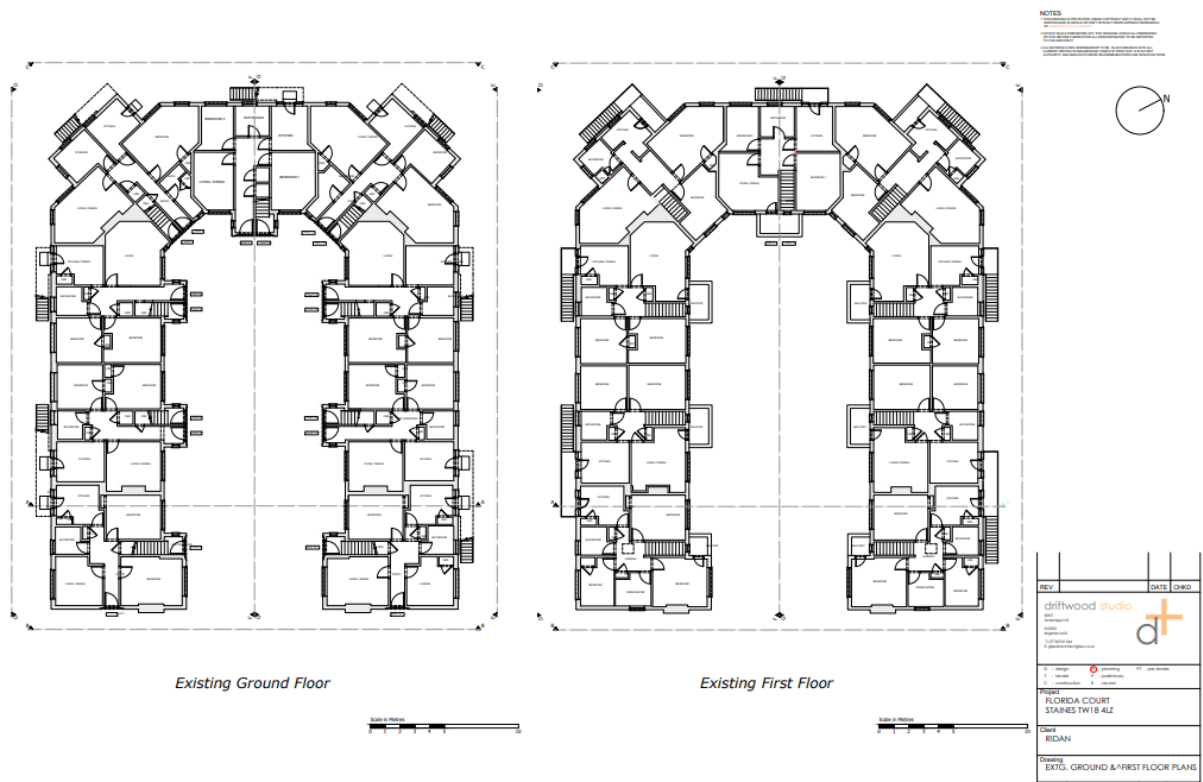
Proposed Block Plan



Existing Elevations:



Existing Floor Plans



Proposed Elevation Plans

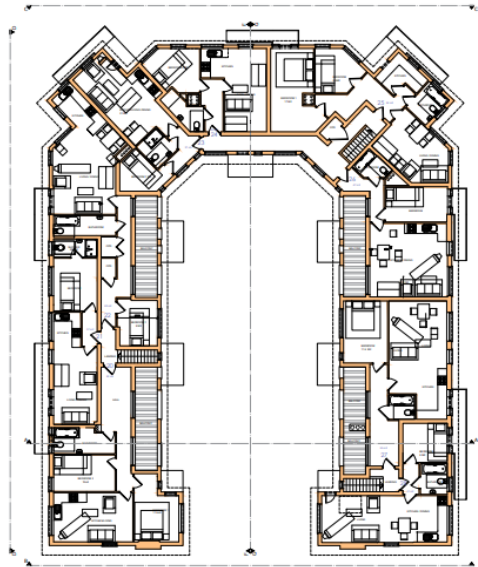


Proposed Floor Plans

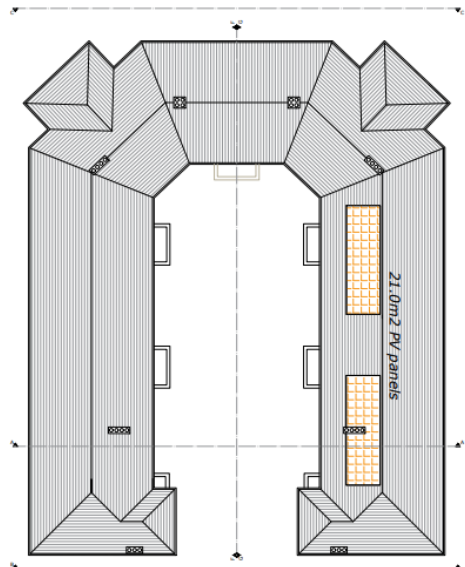


NOTES

1. All dimensions are to the face of the wall unless otherwise indicated.
2. All areas are in square meters unless otherwise indicated.
3. All areas are to be finished to the level of the finished floor unless otherwise indicated.
4. All areas are to be finished to the level of the finished floor unless otherwise indicated.
5. All areas are to be finished to the level of the finished floor unless otherwise indicated.



Proposed Second Floor



Proposed Roof Plan

NEW SECOND FLOOR

flat 20	62m2	2 b/3p
flat 21	37m2	1 b/1p
flat 22	60m2	1 b/1p
flat 23	37m2	1 b/1p
flat 24	40m2	1 b/1p
flat 25	64m2	2 b/3p
flat 26	47m2	1 b/1p
flat 27	55m2	1 b/2p
flat 28	41m2	1 b/1p

SITE AREA 0.22 Ha

1. Initial PFI submitted	May 17
2. Initial PFI submitted	May 17
3. Initial PFI submitted	May 17
4. Initial PFI submitted	May 17
5. Initial PFI submitted	May 17
6. Initial PFI submitted	May 17
7. Initial PFI submitted	May 17
8. Initial PFI submitted	May 17
9. Initial PFI submitted	May 17
10. Initial PFI submitted	May 17
11. Initial PFI submitted	May 17
12. Initial PFI submitted	May 17
13. Initial PFI submitted	May 17
14. Initial PFI submitted	May 17
15. Initial PFI submitted	May 17
16. Initial PFI submitted	May 17
17. Initial PFI submitted	May 17
18. Initial PFI submitted	May 17
19. Initial PFI submitted	May 17
20. Initial PFI submitted	May 17
21. Initial PFI submitted	May 17
22. Initial PFI submitted	May 17
23. Initial PFI submitted	May 17
24. Initial PFI submitted	May 17
25. Initial PFI submitted	May 17
26. Initial PFI submitted	May 17
27. Initial PFI submitted	May 17
28. Initial PFI submitted	May 17
29. Initial PFI submitted	May 17
30. Initial PFI submitted	May 17
31. Initial PFI submitted	May 17
32. Initial PFI submitted	May 17
33. Initial PFI submitted	May 17
34. Initial PFI submitted	May 17
35. Initial PFI submitted	May 17
36. Initial PFI submitted	May 17
37. Initial PFI submitted	May 17
38. Initial PFI submitted	May 17
39. Initial PFI submitted	May 17
40. Initial PFI submitted	May 17
41. Initial PFI submitted	May 17
42. Initial PFI submitted	May 17
43. Initial PFI submitted	May 17
44. Initial PFI submitted	May 17
45. Initial PFI submitted	May 17
46. Initial PFI submitted	May 17
47. Initial PFI submitted	May 17
48. Initial PFI submitted	May 17
49. Initial PFI submitted	May 17
50. Initial PFI submitted	May 17
51. Initial PFI submitted	May 17
52. Initial PFI submitted	May 17
53. Initial PFI submitted	May 17
54. Initial PFI submitted	May 17
55. Initial PFI submitted	May 17
56. Initial PFI submitted	May 17
57. Initial PFI submitted	May 17
58. Initial PFI submitted	May 17
59. Initial PFI submitted	May 17
60. Initial PFI submitted	May 17
61. Initial PFI submitted	May 17
62. Initial PFI submitted	May 17
63. Initial PFI submitted	May 17
64. Initial PFI submitted	May 17
65. Initial PFI submitted	May 17
66. Initial PFI submitted	May 17
67. Initial PFI submitted	May 17
68. Initial PFI submitted	May 17
69. Initial PFI submitted	May 17
70. Initial PFI submitted	May 17
71. Initial PFI submitted	May 17
72. Initial PFI submitted	May 17
73. Initial PFI submitted	May 17
74. Initial PFI submitted	May 17
75. Initial PFI submitted	May 17
76. Initial PFI submitted	May 17
77. Initial PFI submitted	May 17
78. Initial PFI submitted	May 17
79. Initial PFI submitted	May 17
80. Initial PFI submitted	May 17
81. Initial PFI submitted	May 17
82. Initial PFI submitted	May 17
83. Initial PFI submitted	May 17
84. Initial PFI submitted	May 17
85. Initial PFI submitted	May 17
86. Initial PFI submitted	May 17
87. Initial PFI submitted	May 17
88. Initial PFI submitted	May 17
89. Initial PFI submitted	May 17
90. Initial PFI submitted	May 17
91. Initial PFI submitted	May 17
92. Initial PFI submitted	May 17
93. Initial PFI submitted	May 17
94. Initial PFI submitted	May 17
95. Initial PFI submitted	May 17
96. Initial PFI submitted	May 17
97. Initial PFI submitted	May 17
98. Initial PFI submitted	May 17
99. Initial PFI submitted	May 17
100. Initial PFI submitted	May 17